



TYR

**CHOKE-INPUT NEXUS™ AND CONTINUITY™
MONOBLOCK AMPLIFIER**

IN NORSE MYTHOLOGY, TYR WAS THE GOD OF WAR AND JUSTICE.
HE WAS ALSO ONE-ARMED BECAUSE HE WAS TRYING TO BE COOL
WITH FENRIR AND THE OTHER GODS PLAYED A TRICK ON HIM.
IN OUR SIMPLE MINDS, ONE-ARMED = MONOBLOCK.
YEAH. THAT'S WHERE COMICS GET YOU.

OWNER'S MANUAL

INTRODUCTION

Tyr is a choke-input monoblock amplifier featuring our Nexus™ differential topology and Continuity™ constant-transconductance output stage. Or, in non-techy, non-buzzword-bingo terms, it's Schiit's biggest and best amplifier. We've looked back to the past to bring back one of its greatest hits—the choke-input power supply—while incorporating state-of-the-art microprocessor oversight and protection.

WHAT'S IN THE BOX

- (1) Tyr
- (1) Power cord, special super-thick edition
- (0) Fanciness in the power cord
- (0) Expectation the cord changes the sound



The following is required by the roughly 9,542 government agencies and regulations we have to comply with. If you have some common sense, they should seem pretty straightforward. In any case, read these instructions before proceeding farther, follow all instructions, and heed all warnings. Or else!

1. If you don't know how to install audio devices, get a qualified professional to help.
2. Never use this device near water, and clean only with a dry cloth.
3. Assure adequate ventilation, do not block any ventilation openings, or place near heat sources.
4. Use only the supplied power cord or suitable replacement. Route cords away from traffic areas and protect them from being pinched. Unplug the cord from the outlet if the apparatus is unused for a long period of time.
5. To prevent electric shock, do not use the plug with an extension cord, receptacle, or outlet unless blades can be fully inserted.
6. Refer all servicing to qualified service personnel. Service is required when the device has been damaged, including cord or plug damage, liquid has been spilled or objects have fallen into the device, the device has been exposed to rain or moisture, does not operate normally, or has been dropped.



WARNING: TO REDUCE THE RISK OF FIRE OR ELECTRIC SHOCK, DO NOT EXPOSE THIS DEVICE TO RAIN OR MOISTURE.

GETTING STARTED

“How hard can it be getting started with a simple speaker amp?” you may be asking. Well, not hard at all, as long as you keep a few things in mind.

Tyr is heavy. Not like “so heavy you need reinforced concrete floors,” or “this amp creates its own gravity,” but probably heavier than you think. Each is about 55 pounds, while still being relatively small. Be careful when lifting and moving Tyr.

Tyr runs warm. Again, this isn’t grille-meat-while-you-listen warm, but each Tyr runs pretty warm. That means:

- Do not stack your Tyrs
- Ensure there’s plenty of ventilation around each Tyr
- If you’re putting Tyrs in a cabinet, ensure at least 2” of free airspace above each amp, and that the cabinet is open to the air on at least one side

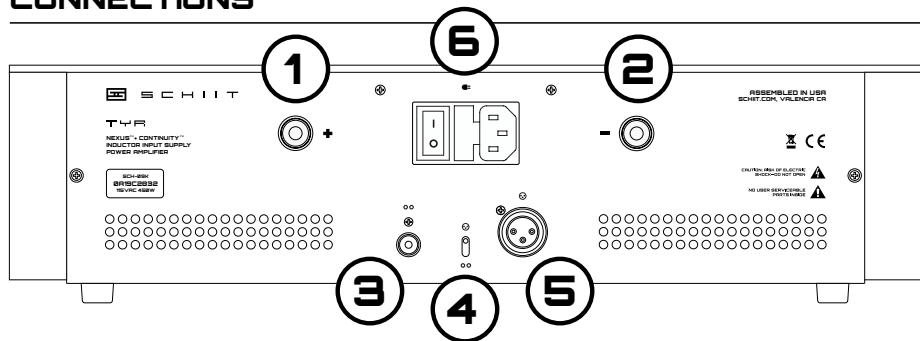
- If you’re putting them directly on the ground, thick carpet may impede airflow over the exposed heatsinks

Also, if you like your house warm—as in, over 80 degrees F, don’t be surprised if Tyr may need some additional fan cooling. These amps are designed for use in typical air-conditioned indoor temperatures.

You need one Tyr per speaker. Yes, this might sound silly, but we actually have gotten a lot of questions about how to connect this amplifier to two speakers. However, Tyr is a monoblock—which means it’s a single-channel amplifier. Which means you need one per speaker.

You can’t “bridge” Tyr. This is a differential amplifier, which means both speaker terminals are “hot.” This also means you can’t use Tyr with speakers that have a common ground between both channels (this is very, very odd—if there are no cables connecting your speakers together, you’re safe).

CONNECTIONS



1 & 2 Speaker Outputs. Connect a speaker to these outputs. The right output is positive, and left output is negative, but both are active—don't ground either output, or connect them together.

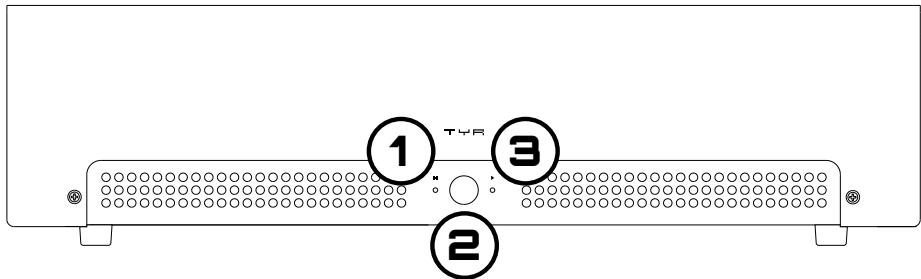
3 RCA Input. Connect one channel of a single-ended source using a high-quality RCA cable.

4 Input Switch. Up selects the XLR balanced input, down selects the RCA input.

5 XLR Input. Connect one channel of a balanced source using a high-quality XLR cable.

6 Power Switch. Up is on. Down is off. Pretty simple. Feel free to leave the amp on all the time if you'd like, and use the front button to put it into low-power Standby mode. An extra fuse is located in the integrated fuseholder.

OPERATION



1 Standby Light. When this light is on, Tyr is in Standby mode—the amp is muted and the output stage is de-biased. This light also serves as an alert light. It flashes during self-check on startup and flashes if there is a fault. If it flashes during operation, Tyr is too hot.

2 Standby Button. Press this button to put Tyr in Standby mode and significantly reduce power draw. Press again to take Tyr out of Standby mode for normal use.

3 Operate Light. When this light is on, Tyr is in Operate mode and working optimally (that is, it will play music when fed a musical signal from an appropriate source.) If it flashes during operation, Tyr has detected a DC level that is too high.

Note: if both the Standby and Operate lights flash, Tyr has detected an overcurrent condition. See the next page for how to clear faults.know, a fan—to avoid thermal shutdown).

CLEARING FAULTS

Okay, so you have a flashing light (or two.) Deep breath. We'll get this taken care of shortly.

When Tyr runs into an operational problem, it will mute and flash one or more of its front lights. This is what it means:

1. Over-temperature (left, Standby light flashing). The heatsinks are too hot, and Tyr has muted so it can cool down. Turn off the amp, wait a while for it to cool down, and try turning it on again. Tyr runs high standing bias, and needs to be in a well-ventilated area. In very warm homes (more than 30 degrees C/85 degrees F, for example), you may need to use a fan for additional cooling to avoid overtemperature shutdown.

2. High DC offset (right, Operate light flashing). Tyr is a DC-coupled amp. Its microprocessor monitors DC levels at the output. If a high DC level is detected, the amp will mute to protect your speakers. To clear this fault, turn off the

amp, disconnect the RCA cables or XLR cable from the amp, and turn it back on again. If the amp turns on normally, then there may be high DC on the output of your source. Have the source inspected and repaired.

3. Over-current (both Standby and Operate lights flashing). If your speaker cables are shorted, or if you are running into an especially demanding speaker load, Tyr may go into over-current protection. As with other fault modes, it mutes for protection, and flashes both front lights.

To troubleshoot over-current protection, turn off the amp, disconnect the speaker cables from the amp, and turn it back on again. If it comes back on, there may be a short in your speaker cables (or your speakers). Examine your connections to ensure there are no stray wires or shorts. Once those have been fixed, you can reconnect the speakers and play music again.

5-YEAR LIMITED WARRANTY

Schiit Audio warrants to the original purchaser that this product shall be free from defects in material and workmanship for five (5) years from the date of purchase. If a defect covered by this warranty occurs during this period, Schiit Audio will repair the defective product, free of charge. Date of purchase will be based on customer receipts, otherwise date of manufacturing will be used.

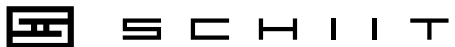
If you believe you need warranty service, contact us first. Schiit Audio products sent back to us without a Return Authorization (RA) will be returned to the sender without repair. To contact us and obtain an RA, email info@schiiit.com.

Warranty Limitations. This warranty shall not apply if a product: (a) is modified or tampered with; (b) is damaged by negligence, accident, unreasonable use, or other causes unrelated to defective materials or workmanship, or (c) has had the serial number altered or removed.

Any implied warranties, including warranties of merchantability and fitness for a particular purpose, are hereby limited in duration to the warranty period of 5 years. In no event shall Schiit Audio be liable for consequential or incidental damages resulting from the breach of any implied or expressed warranties. Some states do not allow these limitations, so they may not apply to you. You may also have other rights which vary from state to state or province to province.



Application for Council Directives 72/23/EEC
Conformity declared for EN60065, EN50082-1



SCHITT.COM
INFO@SCHITT.COM